



# Barrel Ba\$h™

## WEEKEND EVENTS

Fri Youth/Sr \$100 ADM/Fri Open \$1000 ADM  
 Sat Youth/Sr \$100 ADM/Sat Open \$2000 ADM  
 FUTURITY/DERBY/ADULT SAT SIDEPOTS  
 Sun Youth/Sr \$100 ADM/Sun Open \$2000 ADM  
 Sun \$5000 BRF SIDEPOT

Guthrie, OK Lazy E Arena

Pre entries with payment due postmarked July 14

Pre entries due ONLINE by July 21

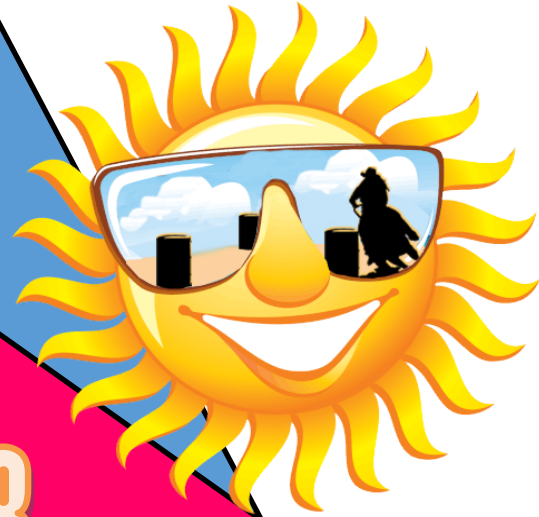
www.barrelbash.com

Entries taken ON SITE

NO LATE FEE Open to all!

918-617-0660 fmi

CALL RENEA



# July 27-29, 2018

# \$5,600 Barrel Ba\$h

# \$5,000 Bonus Race Regionals

# Sidepot

Sun BRF sidepot open to anyone with a 2018 or 2019 BRF qualifier id. You can check the list at [www.bonusracefinals.com](http://www.bonusracefinals.com)  
 \*NOTE\* the 2019 list will not be posted until June 2019 World Finals are complete. Sidepot of \$50.

[www.barrelbash.com](http://www.barrelbash.com)



# BONUS RACE REGIONALS

# JULY 27-29, 2018 GUTHRIE, OK

## \$5600 ADDED PLUS \$5000 BRF SIDEPOT

Mail in pre-entries due (postmarked) JULY 14, AND online pre entries due JULY 21

### WEEKEND SCHEDULE

BUCKLES WEEKEND HI POINT  
1D-5D HORSE/RIDER



## Barrel Bash™

**FRI**  
10 am stall/show office open WARM UPS & EXHIB FOR FRI ON SALE  
11:am—3:30 pm Warm Up Sessions (25 min each) \$10 rider barrels setup max 10 horses/session (SOLD ON SITE)  
4-5:15 pm Exhibitions \$5 each (SOLD ON SITE)  
6 pm Youth/Sr 3D (full sec split) \$25 ef (if you enter open also you must roll from this class)  
7 pm Open 5D \$1000 added \$35 ef  
8 pm Sat Exhibitions & Warm Ups go on sale (limited #)

#### SAT Cowgirl Tuff/BTuff Day

8-9 am Warm Up Sessions (25 min each) \$10 rider barrels setup max 10 horses/session These go on sale Fri 8:00 PM  
9:30-10:15 am Exhibitions \$5 each (limited tickets) These go on sale Fri 8 pm  
11 am Youth/Sr 3D \$25 ef (if you enter open also you must roll from this class)  
12 pm Open 5D \$2000 \$55 ef added (plus futurity, derby, adult sidepots)

#### SUN \$5000 BONUS RACE FINALS SIDEPOT

7:45 am Cowboy Church (pending)  
8:15 am Office Open  
9 am Youth/Sr 3D \$25 ef (if you enter open also you must roll from this class)  
10 am Open 5D \$2000 added \$55 ef (PLUS \$5000 BRF sidepot)

**No late fees.** Late entry closing time for youth/sr is when first horse runs. Youth/Sr entering open also MUST run in Youth/Sr class AND CARRY TO THE OPEN. (You do not have the option to run 2x). Late entry CLOSING TIME for open tba when we know how many pre entries we have (Wed before event). Pre draw posted online Wed prior to event. Office fee \$7/rider/day max

RIDER NAME \_\_\_\_\_

ADDRESS \_\_\_\_\_

CITY ST ZIP \_\_\_\_\_

PHONE \_\_\_\_\_ Soc Sec # needed to collect winnings!

**BRF SIDEPOT \$50/RUN UNIQUE ID# NEEDED FOR EACH HORSE**

**You may use 2018 OR 2019 BRF Qualifier ID #**

**Payout 5D 1/2 sec splits**

HORSE NAME \_\_\_\_\_ QUALIFIER ID # \_\_\_\_\_

HORSE NAME \_\_\_\_\_ QUALIFIER ID # \_\_\_\_\_

HORSE NAME \_\_\_\_\_ QUALIFIER ID # \_\_\_\_\_

HORSE NAME \_\_\_\_\_ QUALIFIER ID # \_\_\_\_\_

**MAIL WITH PAYMENT made TO** DOUBLE B PRODUCTIONS, LLC

PO BOX 306 CHECOTAH OK 74426

WEBSITE **WWW.BARRELBASH.COM** RULES/DRAW/RESULTS

**DRAW WILL BE POSTED ONLINE Wed PRIOR TO EVENT**

**SAT SIDEPOTS Must enter Sat open to enter sidepot.** FUTURITY 2D FULL SEC SPLIT (5 7 UNDER FUTURITY ELIGIBLE) \$25 DERBY (7 AND UNDER) STRAIGHT PAYBACK, ADULT 3D (AGE 20-49) Youth/Sr are drawn together but paid separately. 75% payback 100% adm. Open (1/2 sec spl) 75% payback 100% adm. Open races \$1/run Run For The Bonus held out. NO REFUNDS FOR ANY REASON AFTER ENTRY DEADLINE. You may sell your spot until start time Fri. New rider must make changes in show office before start time. New rider must fill out paperwork in show office and pay office fees before change is considered official. **By entering I agree to hold harmless Double B Productions, LLC, Lazy E Arena, sponsors, and staff in case of accident, theft, death to myself or horse while at this event.**

REGISTERED NAME OF HORSE

CIRCLE CLASSES YOU WISH TO ENTER EACH HORSE IN.

HORSE	Fri Y	FriSr	FRI OP	SAT Y	Sat Sr	SAT OP	SAT SIDEPOTS	Sun Y	Sun Sr	SUN OP
_____	\$25	\$25	\$35	\$25	\$25	\$55	FUT/DER/AD	\$25	\$25	\$55
_____	\$25	\$25	\$35	\$25	\$25	\$55	FUT/DER/AD	\$25	\$25	\$55
_____	\$25	\$25	\$35	\$25	\$25	\$55	FUT/DER/AD	\$25	\$25	\$55
_____	\$25	\$25	\$35	\$25	\$25	\$55	FUT/DER/AD	\$25	\$25	\$55

Stalls \$60/weekend All horses on grounds overnight **MUST stall** (no tie outs) # stalls \_\_\_\_\_ x \$ \_\_\_\_\_ = \$ \_\_\_\_\_ Stalls open Fri 8 am.

If you need a stall for Sat night only we can sell you one ON SITE ONLY \$45 fee. Any stall opened Fri will be charged the full weekend fee \$60.

RV ARE FIRST COME FIRST SERVED AND HANDLED BY THE FACILITY

Office Fee \$7/day/ rider /weekend Total office fee \$ \_\_\_\_\_ Total entry fees and sidepots & stalls from above \$ \_\_\_\_\_ Total Due \$ \_\_\_\_\_

THIS EVET IS A DOUBLE QUALIFIER FOR THE BONUS RACE WORLD FINALS GIVING DOUBLE THE NORMAL AMOUNT OF QUALIFIERS. QUALIFIERS WILL ALSO BE GIVEN THIS YEAR IN THE REGIONAL SIDEPOT ON SUNDAY (IN ADDITION TO THE MAIN RACE).

**WWW.BONUSRACEFINALS.COM** (check your qualifier ids on this website) look for Qualifier ID List

